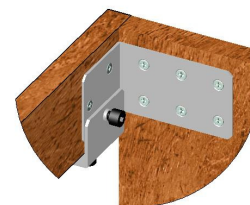
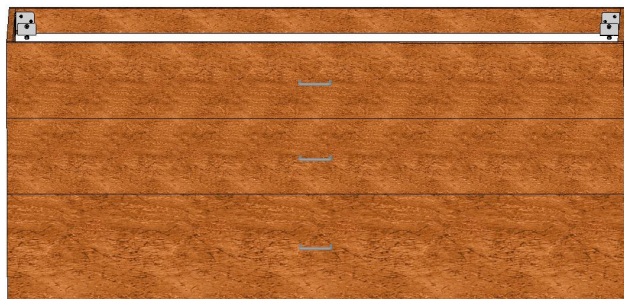
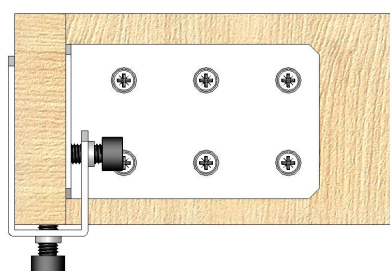
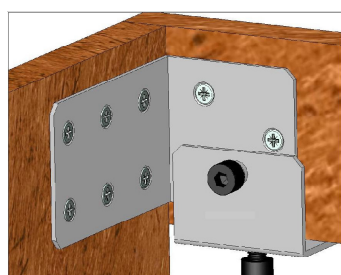


## COLGADOR PARA MUEBLES DE BAÑO SUSPENDIDOS

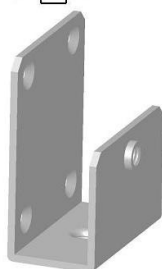
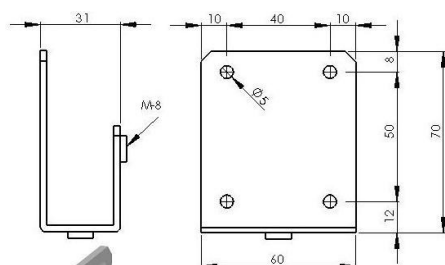
### DETALLES DEL MONTAJE



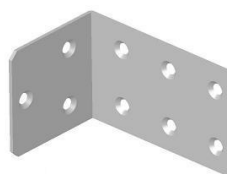
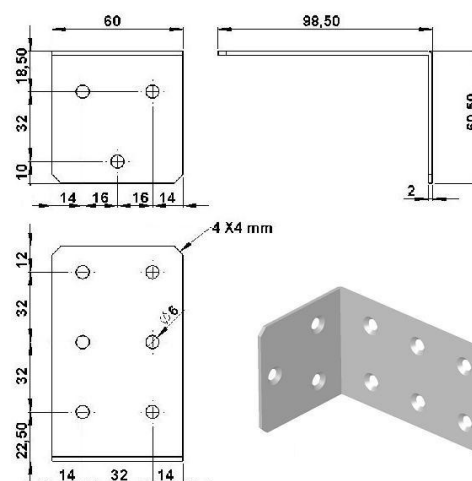
DETALLE A  
ESCALA 1 : 5



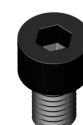
El montaje se realiza amarrando primero los COLGA0631A a la pared, se cuelga el mueble con el travesaño y las piezas COLGA0632A ya montadas, y finalmente se regula fácilmente en las tres direcciones hasta la posición deseada sin tener que sostenerlo ni descolgarlo.



Ref. COLGA0631AVG  
Material Acero  
Peso 144 grs.  
Tirafondo Ø5



Ref. COLGA0632AVG  
Material Acero  
Peso 140.1 grs.  
Tirafondo Ø4.5



Ref. TO01080020  
M.8 X 20  
Peso 12.50 grs.  
DIN 912



Ref. TO07080020  
M.8 X 20  
Peso 12 grs.  
DIN 931



Ref. ES13080016  
M.8 X 16  
Peso 4.05 grs.  
DIN 913

### CONJUNTOS

| CONJUNTO     | 1-COLGA0631AVG | 1-COLGA0632AVG | 2-T001080020TG Tornillo Allen     | 284.10 Grs. |
|--------------|----------------|----------------|-----------------------------------|-------------|
| COLGA063CAVG | 1-COLGA0631AVG | 1-COLGA0632AVG | 2-T001080020TG Tornillo Allen     | 284.10 Grs. |
| COLGA063CBVG | 1-COLGA0631AVG | 1-COLGA0632AVG | 2-T007080020VG Tornillo Hexagonal | 308.10 Grs. |
| COLGA063CCVG | 1-COLGA0631AVG | 1-COLGA0632AVG | 2-ES13080016TG Espárrago          | 292.20 Grs. |



### HERRAJES SAIZ, S.L.

Pol. Ind. Villalonquéjar C/ Merindad de Castilla la Vieja, nº 14 09001 BURGOS-ESPAÑA  
Tel. 947298353 Fax 947298388 [www.herrajessaiz.com](http://www.herrajessaiz.com) [herrajessaiz@herrajessaiz.com](mailto:herrajessaiz@herrajessaiz.com)

